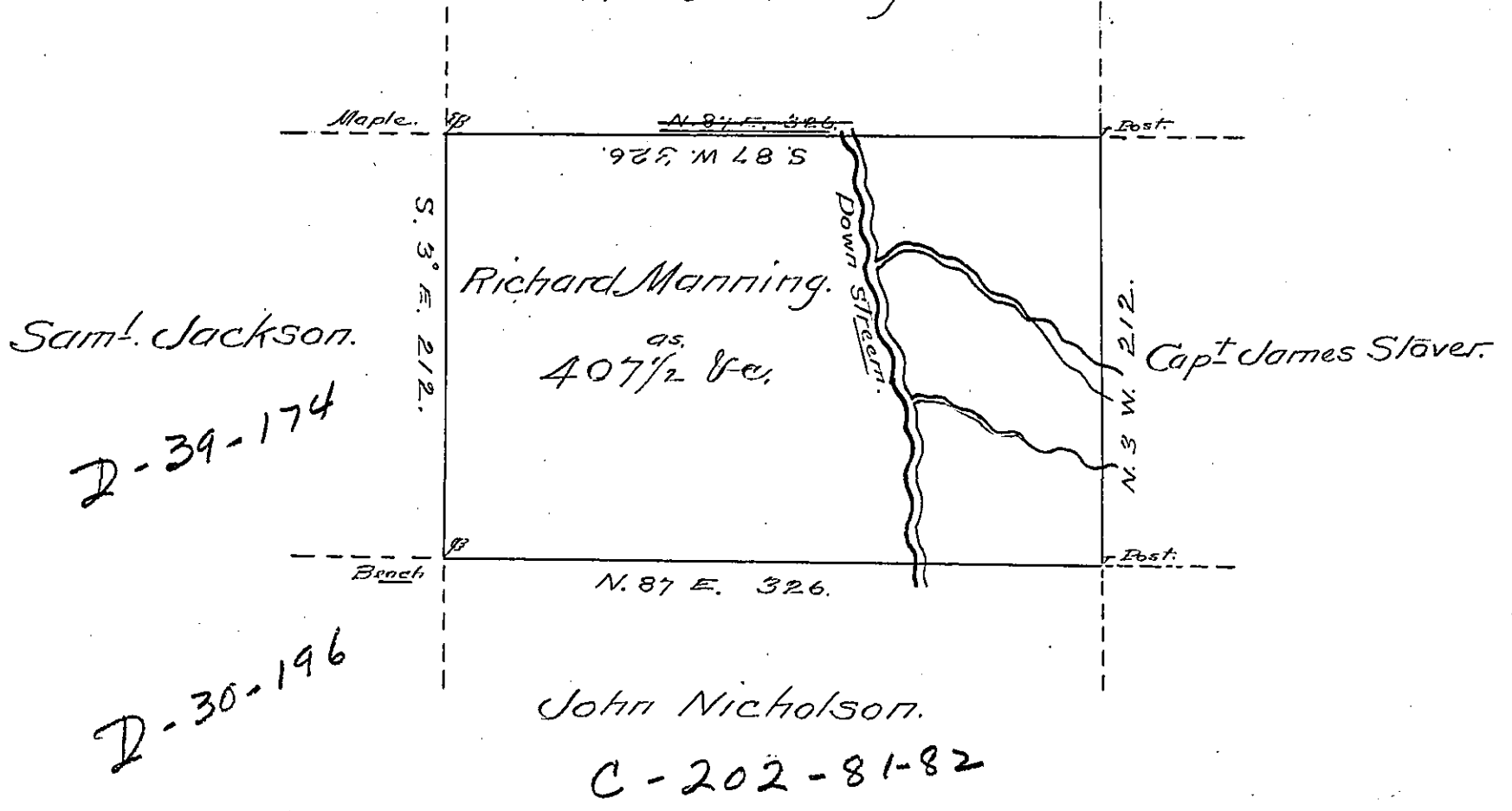


Page - 15  
Ann Manning



A Draught of a tract of land called \_\_\_\_\_  
 Situate <sup>on</sup> a Northerly branch of Tunkhannock Creek  
 Joining land of John Nicholson Esq<sup>r</sup> & others in  
 Stoke Township North<sup>d</sup>. County Containing four  
 Hundred & seven acres <sup>1/2</sup> & allow<sup>e</sup> of six <sup>1/2</sup> Cent  
 for Roads &c. Surveyed the 2<sup>d</sup> Day of Sept<sup>r</sup> 1785  
 for Rich<sup>d</sup> Manning in Pursuance of a Warrant  
 Dated the 22<sup>d</sup> Day of Feb<sup>r</sup> 1785.  
 by W<sup>m</sup> Gray D.S.  
 To John Lukens Esq<sup>r</sup> }  
 Survey Gen<sup>l</sup> }

IN TESTIMONY that the above is a copy of the original remaining on file in  
 the Department of Internal Affairs of Pennsylvania, made  
 conformably to an Act of Assembly approved the 16th day of  
 February, 1833, I have hereunto set my Hand and caused  
 the Seal of said Department to be affixed at Harrisburg,  
 this sixteenth day of November 1905.

*Isaac P. Brown*  
 Secretary of Internal Affairs.